



**TEAM OFFSHORE
NIGERIA**

Team Beleuzi

75 M - 3258 TONS DWT
- DP2 - Platform Supply Vessel

Vessel Specifications





Vessel Specifications

Registration

Year built / builder	2019 / Xiamen Shipbuilding Industry Company Limited
Flag / Port registry	Marshall Islands / Majuro
Class	ABS
Class notations	A1, (E) Offshore Support, Fire Fighting Vessel Class 1, OSR-C, AMS, ACCU, DP2, SPS, HNLS

Dimensions

Length overall	75 m
Breadth (moulded)	17.25 m
Depth moulded	8 m
Maximum draft	6.6 m
Deadweight at maximum draft	3258 t
Registered tonnage	GRT: 2955 / NRT: 908

Machinery

Main engine	2 x Niigata, 2206 kW each at 750 rpm
Main generators	3 x Caterpillar, 450 KW each, 415V, 50Hz, 3 Ph
Emergency generator	1 x Caterpillar, 80 kW, 415 V, 50 Hz, 3 Ph
Bow thruster	2 x Kawasaki KT-88B3 CPP, 650 kW, 10 t thrust each
Propulsion	2 x azimuth fixed pitch rudder propellers
Fresh water maker	2 x 10 t per day
Sewage treatment plant	1 x 50 persons per day

Cargo capacities and rates

Fuel oil	774 m ³
Fresh water	546 m ³
Drill / ballast water	1528 m ³
Mud / brine / rec oil	740 m ³
Base oil / methanol	148 m ³
Dry bulk	228 m ³
Foam	13 m ³
Detergent	13 m ³
Cargo deck area	700 m ²
Deck cargo capacity	1200 t
Deck strength	5 mt/m ²

Discharge rates

Fuel oil	2 x 150 m3 per hour @ 80 m head
Fresh water	1 x 100 m3 per hour @ 85 m head
Drill / ballast water	1 x 100 m3 per hour @ 80 m head
Mud / brine / rec oil	2 x 75 m3 per hour @ 90 m head
Base oil / methanol	1 x 70 m3 per hour @ 7.0 bar
Dry bulk compressors	2 x 20 m3/min at 80psi

DP equipment

DP system maker	Kongsberg
References	2 x DGPS, 1 Laser Reference system 2 x Wind sensor, 2 x Gyro, 2 x VRU

Deck crane

Provision crane	Hydraulic telescopic crane, SWL: 3 t; working radius: 10 m
-----------------	--



Vessel Specifications

Deck machinery equipment

Anchors	2 x 1980 kg high holding anchors
Anchor chain	2 x 467.5 m (length) x 46 mm (dia.), Grade U2 stud link chains
Anchor windlass	1 x 13 t @ 18 m/min for 46 mm chain
Capstans	2 x 10 t @ 25 m/min, electro hydraulic
Tugger winches	2 x 10 t @ 24 m per min, electro hydraulic

Performance

Economical speed	10 knots
Maximum speed	12.5 knots fully loaded to 6.6m draft

Navigation and Communication equipment

Two-way Portable VHF Radio Telephone (GMDSS Type)	
GPS Navigator	1 set
Navtex receiver	1 set
MF/HF radio	1 set
VHF radio telephone	2 sets
Inmarsat-C	1 set
Echo Sounder	1 set
Radars	2 units
Magnetic Compass	1 unit
Gyro Compass	1 unit
Speed Log	1 set x Doppler speed log
Anemometer	1 set
EPIRB	1 set
Joystick Control	Yes

Firefighting and anti-pollution equipment

FIFI System	FIFI class 1
Fire pumps	2 x 1500 m3/ hr
Fire monitors (water / foam)	2 x 1200 m3 / hr
Dispersant system	20 m3 capacity with 6m length spray boom on each side of vessel

Emergency Rescue and lifesaving equipment

Rescue boat	1 x 6 men capacity, diesel powered
Life rafts	6 x 25 men, as per SOLAS requirements
Lifebuoys	8 nos., as per SOLAS requirements
Life jackets	as per SOLAS standards

Accommodation, Hospital and Offices (50 bunks)

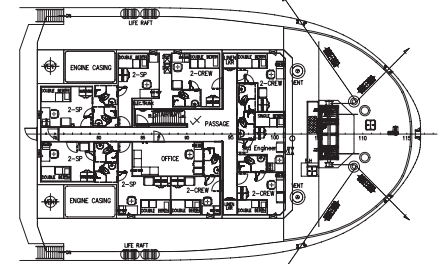
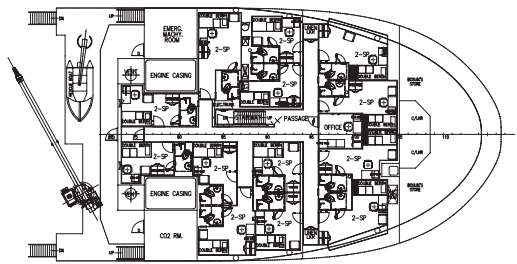
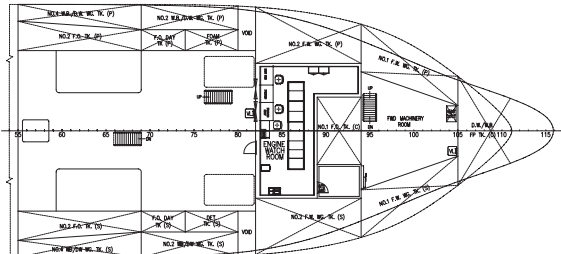
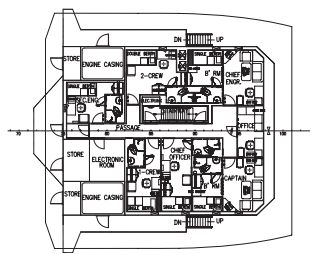
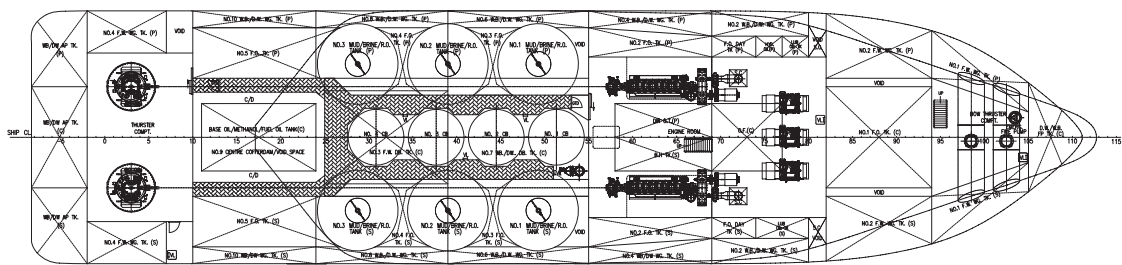
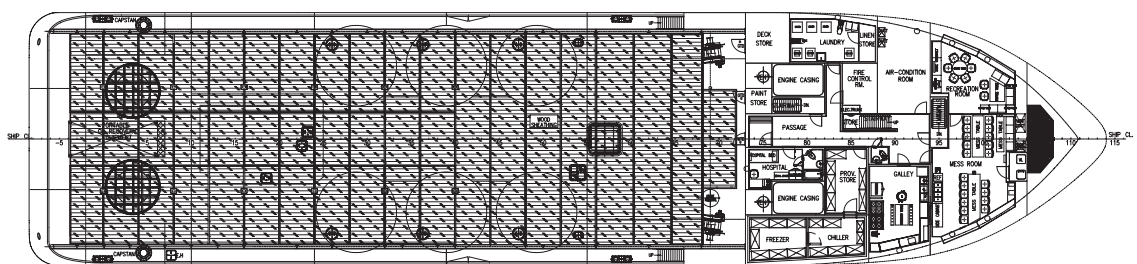
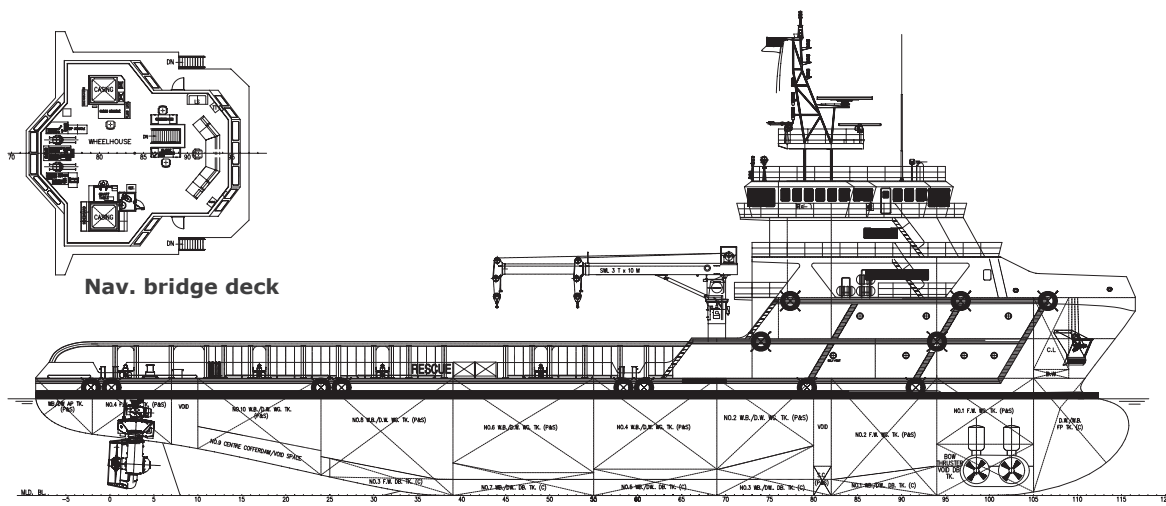
6 x 1 man cabin	6 bunks
22 x 2 men cabin	44 bunks
Total	50 bunks
Hospital	1 berth
Offices	3nos

All cabins fully air conditioned and c/w attached washroom.

Vessel Specifications



TEAM OFFSHORE
NIGERIA



CONTACT

TEAM Offshore Nigeria Limited
Atlantic House – 4th Floor, 121
Louis Solomon Close (Off Ahmadu Bello Way),
Victoria Island, Lagos State, Nigeria
Tel: +234 (0) 908 756 8809
Email: info@TEAM-Offshore.com